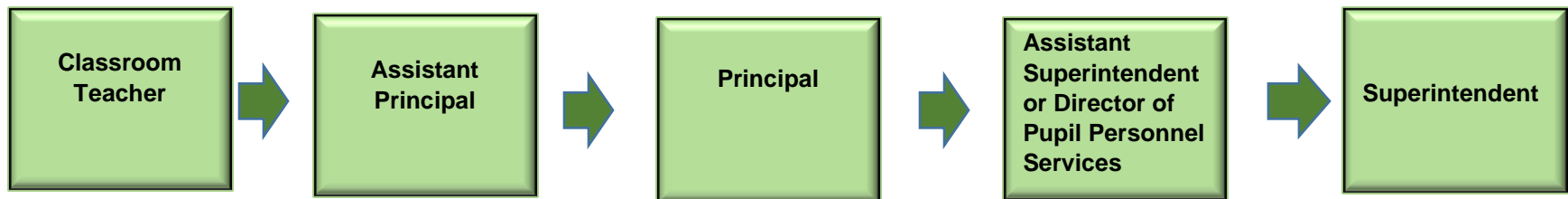




Nashoba Regional School District

On Matters Involving Curriculum & Instruction in Grades PreK-8

The channel of communication that should be followed is:

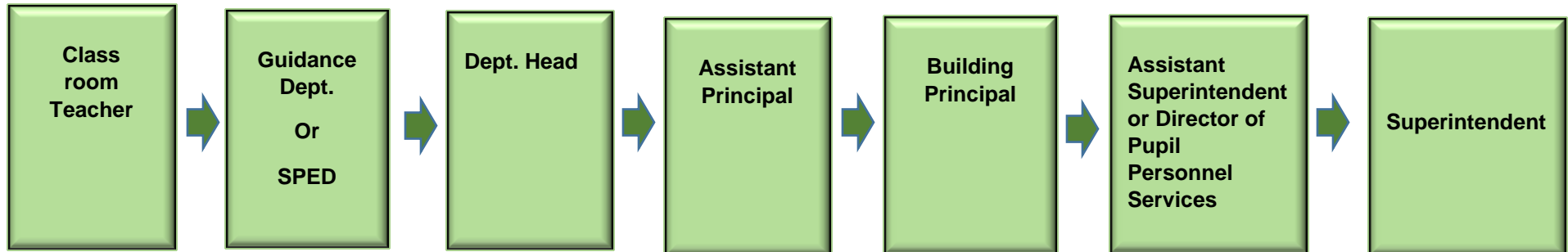




Nashoba Regional School District

On Matters Involving Curriculum & Instruction in Grades 9-12

The channel of communication that should be followed is:

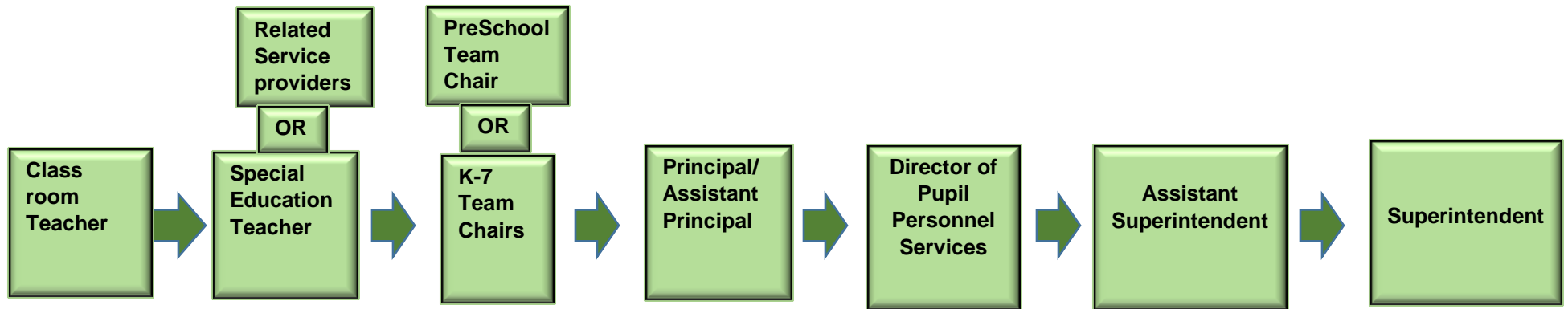




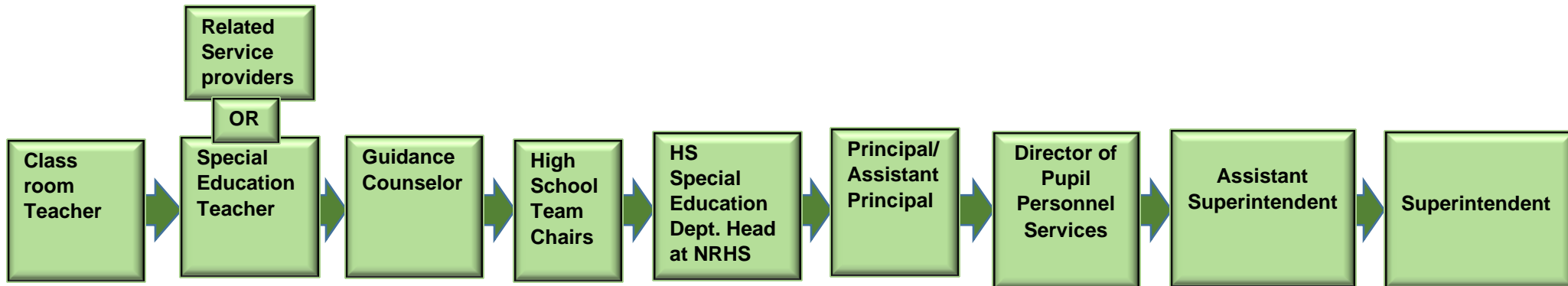
Nashoba Regional School District

On Matters Involving Special Education and/or Pupil Personnel Services PreK-12

The channel of communication for PreK – Grade 8 that should be followed is:



The channel of communication for Grade 9 – Grade 12 that should be followed is:

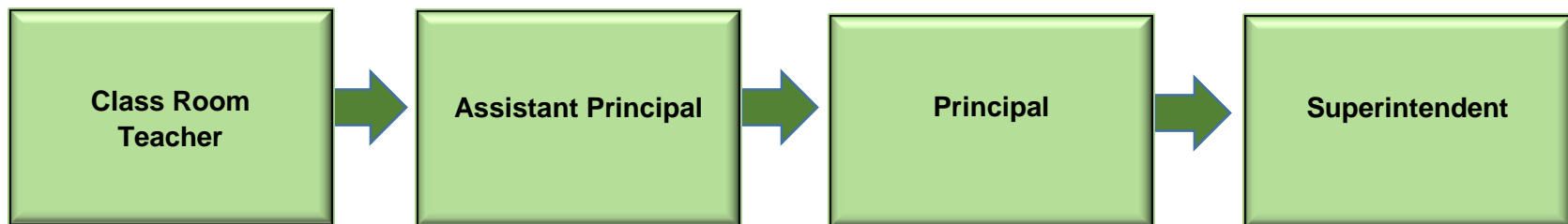




Nashoba Regional School District

On Matters Involving Student Discipline (including bus discipline)

The channel of communication that should be followed is:

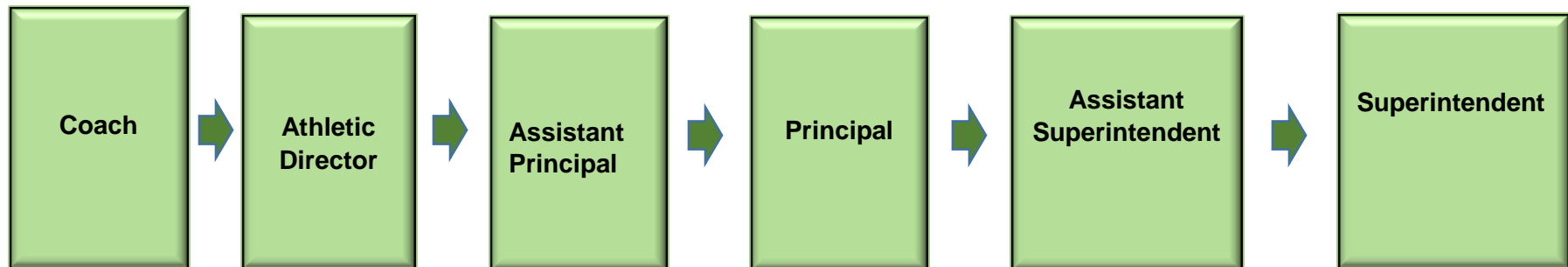




Nashoba Regional School District

On Matters Involving Athletics/ Co-Curricular Activities

The channel of communication that should be followed is:

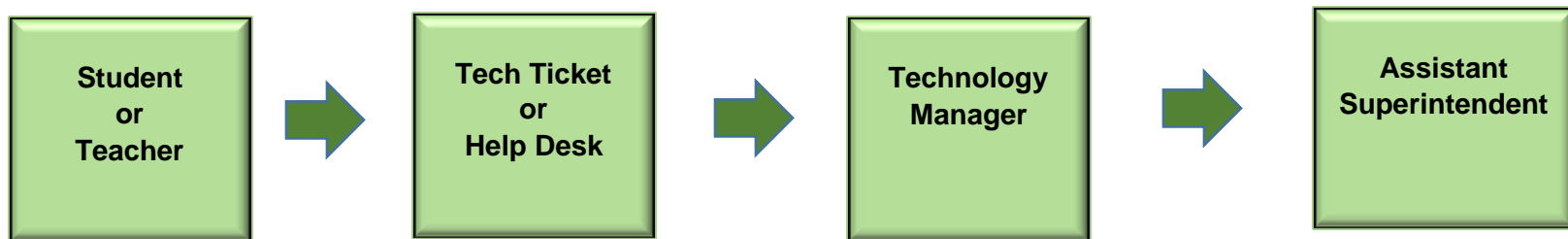




Nashoba Regional School District

On Matters Involving Technological Issues

The channel of communication that should be followed is:



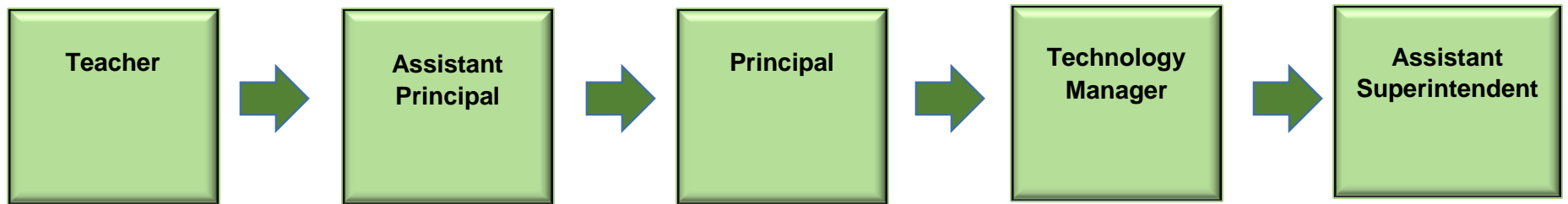


Nashoba Regional School District

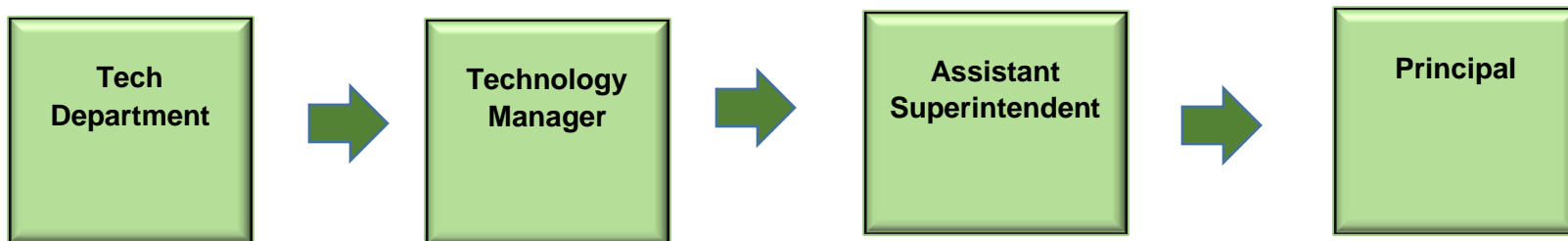
On Matters Involving Technology and Acceptable Use Issues

The channel of communication that should be followed is:

In the Classroom or School Environment:



Online Environment:

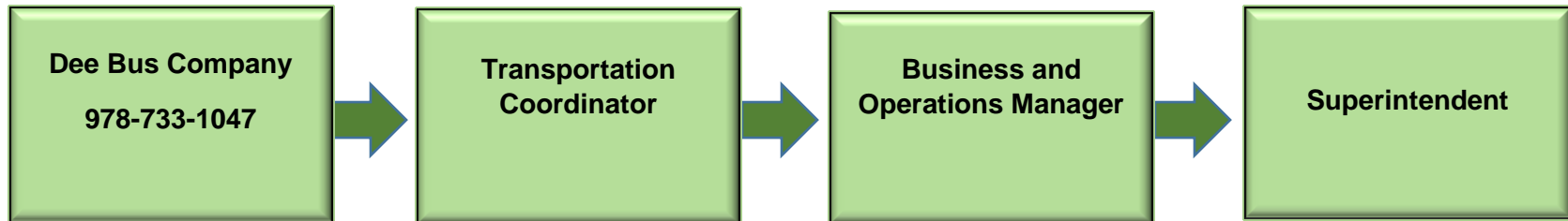




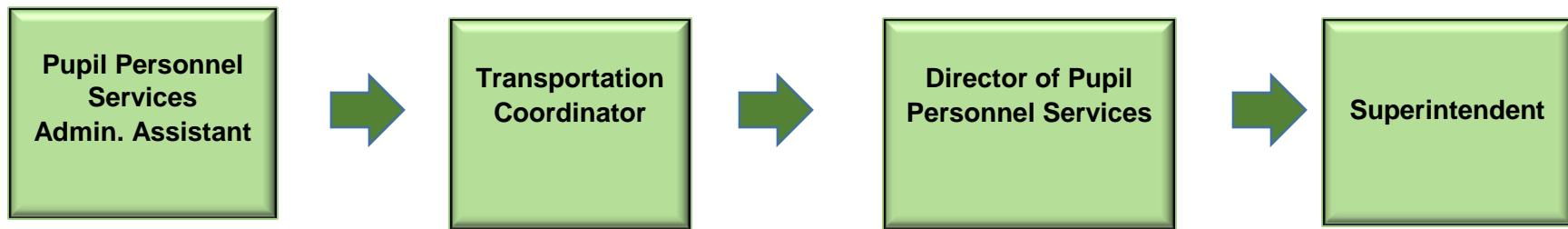
Nashoba Regional School District

On Matters Involving Transportation-Routing Issues (or items left on the bus)

The channel of communication that should be followed is:



The channel of communication that should be followed for Special Transportation is:





Nashoba Regional School District

On Matters Involving Facilities/Buildings/Grounds

The channel of communication that should be followed is:

